

DADES METEOROLÒGIQUES

MESOS DE JULIOL I AGOST 2010

1. NOAA REPORTS

2. DADES DIÀRIES I RESUMS MENSUALS - METEOCLIMATIC -

3. DADES DIÀRIES I RESUMS MENSUALS + GRÀFICS – INFOMET/DARRERA

4. GRÀFIQUES TEMP., HUM.%, P.BAROMÈTRICA PLUJA I VENT – WEATHERLINK

MONTHLY CLIMATOLOGICAL SUMMARY for JUL. 2009

NAME: Pc.13F.VermellaCampingValldeRibes CITY: Ribes de Freser STATE: Catalunya
 ELEV: 985 m LAT: 42° 18' 40" N LONG: 2° 10' 40" E

TEMPERATURE (°C), RAIN (mm), WIND SPEED (km/hr)

DAY	MEAN TEMP	HIGH	TIME	LOW	TIME	HEAT DEG DAYS	COOL DEG DAYS	RAIN	AVG WIND SPEED	HIGH	TIME	DOM DIR
1	17.7	29.2	14:00	11.9	6:00	2.8	2.1	27.9	0.0	16.1	16:00	SE
2	19.0	27.4	17:00	11.1	6:30	2.2	2.9	0.3	0.0	9.7	14:30	NW
3	20.7	28.6	16:30	13.1	6:30	1.5	3.9	0.0	0.0	11.3	13:00	NW
4	18.6	28.1	14:30	12.9	00:00	2.1	2.4	33.0	0.2	19.3	17:30	SE
5	17.1	26.2	13:30	12.0	5:00	2.6	1.4	37.1	0.0	11.3	14:00	NW
6	15.7	21.8	14:30	12.1	6:00	2.9	0.3	6.3	0.0	8.0	15:30	SE
7	16.1	21.8	16:00	12.2	7:00	2.8	0.6	19.8	0.2	14.5	12:30	NW
8	16.4	20.8	16:30	11.8	7:00	2.4	0.5	0.0	0.2	16.1	16:00	NW
9	15.8	23.2	13:30	10.7	7:00	3.2	0.7	0.0	0.3	16.1	15:00	NW
10	16.8	22.9	15:30	13.1	6:00	2.4	0.9	0.5	0.0	11.3	14:00	NW
11	18.7	26.7	17:30	11.4	6:30	1.9	2.3	0.0	0.0	9.7	15:30	NW
12	21.4	29.4	16:30	12.1	6:30	1.6	4.7	0.0	0.0	11.3	16:30	WNW
13	21.6	30.4	17:00	12.6	7:30	1.3	4.6	0.0	0.2	16.1	12:00	NW
14	20.6	29.0	16:30	11.2	6:30	1.9	4.2	0.0	0.0	9.7	14:30	NW
15	20.2	28.6	17:00	11.7	6:30	1.8	3.6	17.5	0.0	25.7	0:30	NW
16	21.2	29.9	16:30	11.9	7:00	1.6	4.5	0.0	0.0	11.3	17:00	NW
17	17.9	24.3	14:30	10.6	00:00	2.1	1.7	0.0	0.6	22.5	18:00	NNW
18	15.7	23.6	17:30	6.0	6:00	4.1	1.5	0.0	0.3	35.4	1:00	SSE
19	16.4	25.4	17:00	6.7	7:00	3.8	2.0	0.0	0.0	9.7	13:00	NW
20	19.9	28.3	17:00	10.7	7:00	2.2	3.8	0.0	0.0	14.5	18:30	NW
21	20.8	30.6	16:30	10.4	7:00	2.2	4.7	5.6	0.2	19.3	21:30	ENE
22	20.9	30.3	16:30	12.2	4:30	1.9	4.6	0.3	0.0	11.3	21:00	SSE
23	23.9	32.3	15:30	14.4	00:00	0.5	6.1	0.0	0.8	25.7	16:00	NNW
24	20.3	31.2	17:00	11.3	5:30	2.4	4.3	0.0	0.6	17.7	10:30	NW
25	18.8	28.3	17:00	9.4	7:30	2.7	3.2	0.0	0.3	14.5	14:00	NW
26	20.8	31.1	16:30	9.8	7:00	2.4	4.9	0.0	0.0	14.5	19:00	NW
27	20.9	31.5	15:00	12.4	7:30	1.5	4.2	0.0	0.2	19.3	16:30	NNW
28	21.3	30.4	16:30	14.3	7:30	1.1	4.2	0.0	0.2	19.3	14:30	NW
29	21.8	32.7	16:00	10.5	7:00	2.0	5.5	0.3	0.0	9.7	13:30	W
30	21.0	29.8	17:30	12.9	7:00	1.6	4.3	0.0	0.0	0.0	---	---
31	20.7	29.4	17:00	10.8	7:00	1.9	4.3	0.0	0.0	0.0	---	---

	19.3	32.7	29	6.0	18	67.4	98.9	148.6	0.1	35.4	18	NW

Max >= 32.0: 2
 Max <= 0.0: 0
 Min <= 0.0: 0
 Min <= -18.0: 0

Max Rain: 37.08 ON 05/07/09

Days of Rain: 11 (> .2 mm) 7 (> 2 mm) 3 (> 20 mm)

Heat Base: 18.3 Cool Base: 18.3 Method: Integration

MONTHLY CLIMATOLOGICAL SUMMARY for AUG. 2009

NAME: Pc.13F.VermellaCampingValldeRibes CITY: Ribes de Freser STATE: Catalunya
 ELEV: 985 m LAT: 42° 18' 40" N LONG: 2° 10' 40" E

TEMPERATURE (°C), RAIN (mm), WIND SPEED (km/hr)

DAY	MEAN TEMP	HIGH	TIME	LOW	TIME	HEAT DEG DAYS	COOL DEG DAYS	RAIN	AVG WIND SPEED	HIGH	TIME	DOM DIR
1	21.8	30.2	15:00	12.8	7:30	1.1	4.5	0.3	0.0	0.0	---	---
2	18.9	24.8	15:30	13.7	6:00	1.5	2.1	6.9	0.0	0.0	---	---
3	17.1	22.0	15:30	14.5	4:30	1.8	0.6	0.0	0.0	0.0	---	---
4	20.2	29.6	18:00	11.5	7:30	1.9	3.8	0.0	0.0	0.0	---	---
5	22.5	33.3	16:30	13.4	7:00	1.4	5.6	0.0	0.0	0.0	---	---
6	22.9	32.6	17:30	14.1	7:30	1.1	5.7	0.0	0.0	0.0	---	---
7	19.2	29.7	14:30	13.7	00:00	2.0	2.9	27.2	0.0	0.0	---	---
8	15.8	27.6	14:30	10.8	7:30	3.8	1.4	25.1	0.0	0.0	---	---
9	15.6	25.7	13:00	12.6	00:00	3.5	0.8	66.0	0.0	0.0	---	---
10	16.6	25.1	14:00	9.7	7:00	3.1	1.4	2.5	0.0	0.0	---	---
11	19.2	28.5	16:30	11.3	7:00	2.2	3.1	0.0	0.0	0.0	---	---
12	19.7	27.8	14:30	12.8	7:00	1.6	3.0	2.0	0.0	0.0	---	---
13	19.2	29.4	16:30	9.8	7:30	2.6	3.5	0.0	0.0	0.0	---	---
14	19.8	30.6	15:00	10.3	6:30	2.6	4.0	0.0	0.0	0.0	---	---
15	18.9	30.4	15:00	12.0	7:00	2.6	3.2	8.1	0.0	0.0	---	---
16	19.1	30.9	16:00	9.8	7:00	3.0	3.7	9.1	0.0	0.0	---	---
17	17.9	30.4	14:00	11.4	6:30	2.5	2.2	14.7	0.0	0.0	---	---
18	19.2	31.3	15:00	12.4	7:30	2.0	2.9	0.0	0.0	0.0	---	---
19	20.7	31.4	17:00	12.4	7:00	2.2	4.6	0.0	0.0	0.0	---	---
20	20.4	31.3	17:00	11.3	7:00	2.4	4.5	0.0	0.0	0.0	---	---
21	20.2	29.8	17:00	11.7	7:30	2.0	4.0	0.0	0.0	0.0	---	---
22	19.6	28.7	15:00	12.1	7:30	1.8	3.1	1.0	0.0	0.0	---	---
23	20.6	30.4	17:30	13.1	6:30	1.6	3.9	0.3	0.0	0.0	---	---
24	19.9	29.8	16:00	12.9	7:30	1.8	3.4	0.8	0.0	0.0	---	---
25	17.2	26.4	14:00	11.6	7:30	2.7	1.6	0.3	0.0	0.0	---	---
26	17.6	27.5	14:00	10.5	7:30	2.6	1.9	0.8	0.0	0.0	---	---
27	19.1	27.8	16:00	11.2	7:30	2.1	2.9	0.3	0.0	0.0	---	---
28	19.1	28.2	13:30	10.7	7:30	2.2	3.0	0.0	0.0	0.0	---	---
29	18.8	25.7	16:30	12.4	8:00	1.7	2.2	0.0	0.0	0.0	---	---
30	18.1	25.9	16:30	10.3	8:00	2.3	2.0	0.0	0.0	0.0	---	---
31	18.3	28.1	16:30	9.8	7:30	2.8	2.8	0.0	0.0	0.0	---	---

	19.1	33.3	5	9.7	10	68.4	94.1	165.4	0.0	0.0	---	---

Max >= 32.0: 2
 Max <= 0.0: 0
 Min <= 0.0: 0
 Min <= -18.0: 0

Max Rain: 66.04 ON 09/08/09

Days of Rain: 16 (> .2 mm) 9 (> 2 mm) 3 (> 20 mm)

Heat Base: 18.3 Cool Base: 18.3 Method: Integration

MONTHLY CLIMATOLOGICAL SUMMARY for JUL. 2010

NAME: Pc.13F.VermellaCampingValldeRibes CITY: Ribes de Freser STATE: Catalunya
 ELEV: 985 m LAT: 42° 18' 40" N LONG: 2° 10' 40" E

TEMPERATURE (°C), RAIN (mm), WIND SPEED (km/hr)

DAY	MEAN TEMP	HIGH	TIME	LOW	TIME	HEAT DEG DAYS	COOL DEG DAYS	RAIN	AVG WIND SPEED	HIGH	TIME	DOM DIR
1	19.2	28.1	12:15	11.8	5:00	1.8	2.6	0.2	0.3	16.1	13:30	NE
2	20.7	28.7	14:00	12.6	4:45	1.6	4.1	0.0	0.5	11.3	11:15	NNE
3	19.4	28.1	13:00	12.7	4:45	1.9	3.1	7.2	0.6	22.5	16:45	SSE
4	16.7	25.6	11:15	12.3	00:00	2.4	0.8	10.2	0.2	11.3	12:15	NNE
5	19.5	28.1	15:00	9.9	5:00	2.3	3.5	0.2	0.6	11.3	11:45	SSW
6	19.8	25.6	14:30	11.6	5:00	1.4	2.9	0.0	4.3	24.1	13:15	NNE
7	20.9	26.4	14:30	14.2	3:45	0.8	3.4	0.0	3.5	27.4	13:00	NE
8	22.7	29.3	13:30	15.3	3:30	0.5	4.9	0.0	3.1	24.1	12:00	ESE
9	22.6	28.9	9:45	16.4	1:45	0.2	4.5	0.0	3.1	22.5	11:30	ENE
10	20.8	26.6	12:30	14.4	4:45	0.8	3.3	0.0	3.1	29.0	11:30	ENE
11	19.7	28.2	12:15	13.5	00:00	1.2	2.5	3.0	3.5	46.7	13:30	NE
12	21.4	28.6	13:15	13.3	1:45	1.1	4.2	0.0	4.0	29.0	12:15	S
13	21.4	29.8	14:30	12.4	5:30	1.4	4.5	0.0	0.6	14.5	15:30	NNE
14	22.1	30.1	13:45	12.4	5:15	1.3	5.1	0.0	0.5	9.7	10:45	NE
15	21.3	27.3	13:45	13.5	00:00	0.5	3.5	0.2	0.8	17.7	11:00	NNE
16	20.9	30.0	14:00	9.9	5:30	2.0	4.6	0.0	0.5	14.5	18:45	SE
17	21.4	28.5	12:15	14.8	4:30	0.8	3.9	0.0	0.6	11.3	9:45	N
18	20.8	28.6	14:15	13.8	5:30	1.3	3.8	0.0	0.8	19.3	17:00	N
19	19.2	29.7	12:45	12.4	5:30	1.9	2.8	1.4	0.5	19.3	13:45	ESE
20	20.1	28.6	11:15	12.6	4:45	1.7	3.4	0.2	0.3	11.3	10:45	SSE
21	21.0	28.6	13:30	13.5	5:15	1.3	4.0	0.0	0.6	11.3	11:30	NNE
22	17.9	24.4	12:00	12.7	5:15	1.9	1.5	24.4	0.3	17.7	20:00	NE
23	17.7	23.9	15:15	13.5	00:00	1.9	1.3	20.4	0.6	17.7	12:00	N
24	16.9	23.3	13:00	9.1	5:30	2.9	1.5	0.2	0.6	9.7	10:00	N
25	17.1	26.2	14:00	7.4	5:30	3.6	2.4	0.0	0.6	16.1	12:00	N
26	17.4	25.8	15:15	8.8	4:30	3.1	2.2	0.0	1.0	20.9	10:45	N
27	18.3	26.9	14:00	8.9	5:30	2.7	2.7	0.0	0.6	9.7	9:45	SE
28	19.0	27.8	12:30	11.3	4:30	2.2	2.9	5.8	0.5	11.3	14:15	NNE
29	18.2	24.4	11:45	13.5	2:15	1.7	1.5	1.4	0.6	16.1	16:15	S
30	18.3	24.0	13:15	11.0	5:45	1.7	1.7	0.2	0.6	14.5	12:45	S
31	19.2	23.8	17:00	11.9	5:00	1.5	2.4	0.0	0.2	9.7	9:00	N

	19.7	30.1	14	7.4	25	51.5	95.8	75.0	1.2	46.7	11	NNE

Max >= 32.0: 0
 Max <= 0.0: 0
 Min <= 0.0: 0
 Min <= -18.0: 0

Max Rain: 24.41 ON 22/07/10

Days of Rain: 14 (> .2 mm) 6 (> 2 mm) 2 (> 20 mm)

Heat Base: 18.3 Cool Base: 18.3 Method: Integration

MONTHLY CLIMATOLOGICAL SUMMARY for AUG. 2010

NAME: Pc.13F.VermellaCampingValldeRibes CITY: Ribes de Freser STATE: Catalunya
 ELEV: 985 m LAT: 42° 18' 40" N LONG: 2° 10' 40" E

TEMPERATURE (°C), RAIN (mm), WIND SPEED (km/hr)

DAY	MEAN TEMP	HIGH	TIME	LOW	TIME	HEAT DEG DAYS	COOL DEG DAYS	RAIN	AVG WIND SPEED	HIGH	TIME	DOM DIR
1	20.4	26.9	14:15	14.9	4:15	0.9	3.0	0.4	5.0	30.6	18:00	NE
2	17.1	22.8	14:15	11.5	00:00	2.3	1.1	18.2	0.6	20.9	16:30	NNE
3	16.3	23.4	14:15	9.2	5:15	3.2	1.3	0.2	0.5	11.3	13:30	N
4	16.8	23.9	11:45	8.2	5:45	3.0	1.5	0.0	0.3	9.7	11:45	N
5	17.6	25.8	14:00	8.2	00:00	2.8	2.1	0.0	0.6	17.7	10:00	N
6	15.1	23.6	14:15	5.2	5:30	4.6	1.5	0.0	0.5	11.3	14:00	N
7	18.1	27.2	15:30	7.7	5:30	3.3	3.0	0.4	0.3	9.7	12:30	N
8	20.1	28.2	12:00	12.3	5:15	1.9	3.7	0.0	0.2	11.3	11:45	N
9	18.4	28.1	12:30	13.8	4:00	2.0	2.1	5.4	0.3	17.7	16:00	N
10	18.9	27.9	14:30	11.4	5:15	2.0	2.6	0.2	0.3	14.5	11:45	NNE
11	18.3	27.2	12:15	12.7	5:15	3.0	3.0	0.4	0.2	11.3	14:15	ESE
12	15.4	23.8	12:15	9.7	00:00	3.7	0.8	21.2	0.2	22.5	14:15	SSW
13	15.5	22.4	13:30	8.4	4:30	3.6	0.8	0.4	0.3	19.3	14:00	NNW
14	13.6	17.4	15:30	11.2	6:00	4.7	0.0	16.8	0.0	12.9	13:15	NNE
15	14.3	20.8	15:15	10.2	5:45	4.2	0.2	0.0	0.3	11.3	11:30	N
16	15.3	22.8	15:15	7.6	5:45	3.9	0.9	0.0	0.2	9.7	13:45	NNE
17	17.6	25.8	15:15	8.3	5:45	2.8	2.1	0.0	0.8	20.9	18:00	NE
18	18.6	24.6	13:00	13.6	5:30	1.6	1.8	12.4	0.0	9.7	13:00	SE
19	17.4	24.4	11:45	13.4	4:00	2.1	1.2	9.4	0.0	4.8	11:00	N
20	18.3	25.4	14:15	11.2	5:30	2.2	2.2	0.2	0.0	9.7	12:30	SW
21	20.3	29.6	15:30	11.2	5:45	1.9	3.9	0.2	0.0	9.7	12:30	N
22	21.2	30.7	14:45	13.6	00:00	1.6	4.4	0.2	0.3	14.5	16:15	N
23	19.4	29.3	14:45	12.2	5:30	2.4	3.5	0.2	0.3	19.3	12:30	S
24	19.0	27.3	11:45	11.0	5:15	2.0	2.7	0.0	0.2	9.7	11:15	S
25	20.6	29.0	15:30	12.2	5:45	1.4	3.8	0.0	0.2	9.7	13:15	N
26	22.3	32.5	14:30	13.1	5:30	1.3	5.3	0.0	0.5	17.7	13:15	N
27	21.2	30.6	14:15	13.3	5:45	1.5	4.4	0.0	0.6	17.7	12:45	NE
28	17.9	25.1	12:45	9.7	6:00	2.4	2.0	0.2	0.3	11.3	12:15	NNE
29	16.3	24.2	12:30	8.4	5:45	3.5	1.5	0.0	0.3	14.5	16:45	NNE
30	16.6	22.8	15:15	8.9	00:00	2.8	1.1	0.0	0.3	11.3	14:45	N
31	13.8	24.3	14:15	2.9	5:45	5.9	1.5	0.0	0.2	14.5	17:15	NNE

	17.8	32.5	26	2.9	31	84.4	68.9	86.5	0.4	30.6	1	N

Max >= 32.0: 1
 Max <= 0.0: 0
 Min <= 0.0: 0
 Min <= -18.0: 0

Max Rain: 21.21 ON 12/08/10

Days of Rain: 17 (> .2 mm) 6 (> 2 mm) 1 (> 20 mm)

Heat Base: 18.3 Cool Base: 18.3 Method: Integration

Estació de Ribes de Freser-Càmping (ESCAT1700000017534B)

Altitud sobre el nivell del mar (metres): 985

Latitud 42° 18' 40" N - Longitud 2° 10' 40" E

Juliol 2010

Dia	Temperatura (°C)		Humitat (%)		Baròmetre (hPa)		Vent (km/h)	Precip. (mm)
	Màx.	Mín.	Màx.	Mín.	Màx.	Mín.	Màx.	
01	28.1	11.8	98	47	1018.2	1014.7	16	0.2
02	28.7	12.6	100	40	1016.4	1012.9	11	-
03	28.1	12.7	98	40	1019.6	1015.4	23	7.2
04	25.6	12.3	98	58	1021.3	1019.0	11	10.2
05	28.1	9.9	98	54	1021.8	1018.0	11	0.2
06	25.6	11.6	96	51	1020.2	1016.8	24	-
07	26.4	14.2	99	58	1019.1	1015.9	27	-
08	29.3	15.3	97	52	1019.6	1017.4	24	-
09	28.9	16.4	98	36	1019.5	1016.2	23	-
10	26.6	14.4	100	55	1019.1	1016.4	29	-
11	28.2	13.5	97	38	1018.8	1015.8	47	3.0
12	28.6	13.3	85	36	1018.3	1012.2	29	-
13	29.8	12.4	97	37	1013.8	1009.1	15	-
14	30.1	12.4	94	38	1011.1	1007.1	10	-
15	27.3	17.2	97	40	1013.2	1010.6	18	0.2
16	30.0	9.9	97	35	1017.0	1013.7	15	-
17	28.5	14.8	98	52	1020.1	1016.3	11	-
18	28.6	13.8	97	47	1020.0	1016.0	19	-
19	29.7	12.4	98	49	1018.7	1014.6	19	1.4
20	28.6	12.6	98	43	1017.1	1010.4	11	0.2
21	28.6	13.5	97	41	1010.9	1008.4	11	-
22	24.4	12.7	97	55	1016.2	1009.8	18	24.4
23	23.9	13.6	98	59	1021.3	1014.6	18	20.4
24	23.3	9.1	98	57	1021.2	1016.9	10	0.2
25	26.2	7.4	96	41	1017.8	1012.2	16	-
26	25.8	8.8	96	35	1017.6	1013.2	21	-
27	26.9	8.9	97	43	1019.7	1016.1	10	-
28	27.8	11.3	98	51	1020.3	1015.4	11	5.8
29	24.4	13.5	98	67	1016.4	1011.6	16	1.4
30	24.0	11.0	98	61	1015.7	1011.8	15	0.2
31	23.8	11.9	98	67	1016.3	1014.1	10	-

Estació de Ribes de Freser-Càmping (ESCAT1700000017534B)

Altitud sobre el nivell del mar (metres): 985

Latitud 42° 18' 40" N - Longitud 2° 10' 40" E

Agost 2010

Dia	Temperatura (°C)		Humitat (%)		Baròmetre (hPa)		Vent (km/h)	Precip. (mm)
	Màx.	Mín.	Màx.	Mín.	Màx.	Mín.	Màx.	
01	26.9	14.9	99	55	1016.4	1012.6	31	0.4
02	22.8	11.8	99	69	1017.5	1012.9	21	18.2
03	23.4	9.2	98	59	1016.8	1014.3	11	0.2
04	23.9	8.2	98	56	1015.4	1010.4	10	-
05	25.8	8.6	100	19	1014.3	1009.3	18	-
06	23.6	5.2	96	50	1018.4	1013.6	11	-
07	26.8	7.7	98	44	1019.0	1017.3	10	0.4
08	28.2	12.3	98	42	1019.4	1015.5	11	-
09	28.1	13.8	98	59	1018.0	1013.3	18	5.4
10	27.9	11.4	100	57	1017.7	1014.1	15	0.2
11	27.2	12.7	100	60	1017.6	1013.8	11	0.2
12	23.8	9.8	99	63	1016.2	1012.3	23	21.2
13	22.4	8.4	98	63	1016.2	1013.2	19	0.4
14	17.4	11.2	97	71	1015.5	1012.3	15	16.8
15	20.8	10.2	98	53	1019.6	1014.9	11	-
16	22.8	7.6	98	44	1021.6	1018.2	10	-
17	25.8	8.3	100	46	1020.8	1013.9	21	-
18	24.6	13.6	98	67	1015.4	1010.2	10	12.4
19	24.4	13.4	98	66	1018.3	1013.4	5	9.4
20	25.4	11.2	98	59	1024.4	1016.9	10	0.2
21	29.6	11.2	99	48	1025.5	1021.2	10	0.2
22	30.7	13.8	98	39	1022.8	1013.8	15	0.2
23	29.3	12.2	96	36	1014.4	1008.5	19	0.2
24	27.3	11.0	96	56	1017.0	1011.0	10	-
25	29.0	12.2	98	47	1018.9	1016.5	10	-
26	32.5	13.1	100	35	1018.2	1011.7	18	-
27	30.6	13.3	97	22	1014.2	1008.4	18	-
28	25.1	9.7	98	51	1016.4	1013.0	11	0.2
29	24.2	8.4	97	51	1017.3	1014.2	15	-
30	22.8	9.1	94	53	1016.6	1012.9	11	-
31	24.3	2.9	95	27	1017.4	1013.0	15	-

Estació de Ribes de Freser-Càmping (ESCAT1700000017534B)

Altitud sobre el nivell del mar (metres): 985

Latitud 42° 18' 40" N - Longitud 2° 10' 40" E

Any 2010

Mes	Temperatura (°C)		Humitat (%)		Baròmetre (hPa)		Vent (km/h)	Precip. (mm)
	Màx.	Mín.	Màx.	Mín.	Màx.	Mín.	Màx.	
Juliol	30.1	7.4	100	35	1021.8	1007.1	47	75.0
Agost	32.5	2.9	100	19	1025.5	1008.4	31	86.2

RIBES DE FRESER - juliol 2009

Resum del mes:

- **Valors mitjans:**

- Temperatura: **19.3 °C**
- Humitat: **75 %**
- Pressió: **1017.6 hPa**
- Velocitat del vent: **0.0 m/s**
- Direcció: **277 °**
- Precipitació: **148.6 mm**

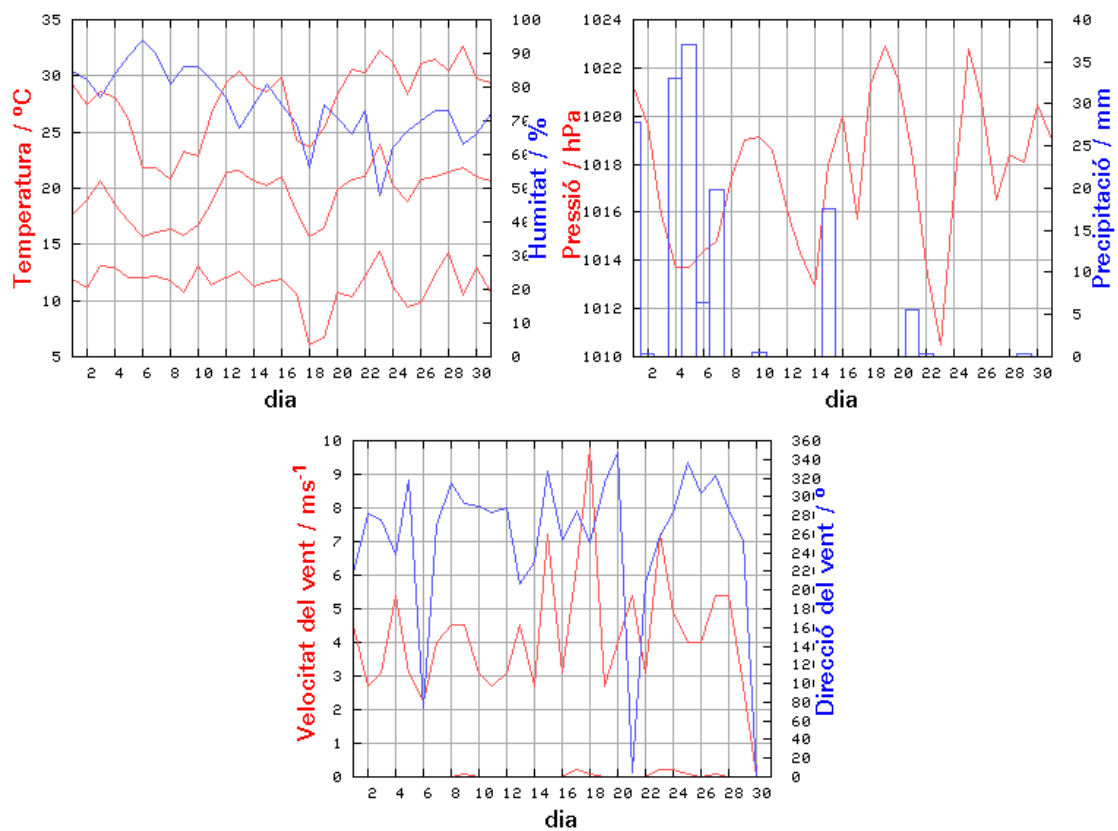
- **Extrems:**

- Temperatura màxima: **32.7 °C** el dia 29 a les 16:00
- Temperatura mínima: **6.0 °C** el dia 18 a les 06:00
- Humitat màxima: **99 %** el dia 2 a les 07:30
- Humitat mínima: **22 %** el dia 23 a les 15:00
- Pressió màxima: **1024.2 hPa** el dia 20 a les 02:00
- Pressió mínima: **1008.2 hPa** el dia 23 a les 07:00
- Velocitat màxima del vent: **9.8 m/s** el dia 18 a les 01:00
- Precipitació màxima: **37.1 mm** el dia 5

Resum diari:

Dia	Pluja	Valors mitjans					Valors extrems						
		Temp	Hum	Pres	VV	DV	Temperatura		Humitat		Pressió		VV
							màx	mín	màx	mín	màx	mín	
mm	°C	%	hPa	m/s	°	°C	°C	%	%	hPa	hPa	m/s	
1	27.9	17.7	85	1021.2	0.0	219	29.2	11.9	98	42	1022.3	1019.6	4.5
2	0.3	19.0	82	1019.6	0.0	282	27.4	11.1	99	51	1021.8	1017.2	2.7
3	0.0	20.7	77	1015.9	0.0	275	28.6	13.1	98	43	1018.6	1013.2	3.1
4	33.0	18.6	84	1013.7	0.0	238	28.1	12.9	98	51	1015.6	1010.9	5.4
5	37.1	17.1	89	1013.7	0.0	317	26.2	12.0	99	59	1015.2	1012.0	3.1
6	6.4	15.7	94	1014.4	0.0	73	21.8	12.1	99	77	1016.2	1013.3	2.2
7	19.8	16.1	90	1014.8	0.0	269	21.8	12.2	99	71	1016.5	1013.6	4.0
8	0.0	16.4	81	1017.4	0.0	315	20.8	11.8	98	62	1019.7	1016.3	4.5
9	0.0	15.8	86	1019.0	0.1	292	23.2	10.7	98	66	1019.9	1017.4	4.5
10	0.5	16.8	86	1019.1	0.0	290	22.9	13.1	97	64	1020.1	1018.3	3.1
11	0.0	18.7	82	1018.6	0.0	283	26.7	11.4	98	55	1020.3	1016.5	2.7
12	0.0	21.4	77	1016.1	0.0	288	29.4	12.1	99	51	1018.3	1013.7	3.1
13	0.0	21.6	68	1014.3	0.0	207	30.4	12.6	98	32	1015.9	1012.7	4.5
14	0.0	20.6	75	1012.9	0.0	230	29.0	11.2	92	52	1015.1	1011.2	2.7
15	17.5	20.2	81	1018.0	0.0	327	28.6	11.7	99	51	1021.7	1015.5	7.2
16	0.0	21.1	75	1020.0	0.0	254	29.9	11.9	98	49	1022.4	1016.9	3.1
17	0.0	17.9	69	1015.7	0.2	285	24.3	10.6	97	36	1019.8	1013.2	6.3
18	0.0	15.7	56	1021.3	0.1	251	23.6	6.0	90	37	1023.9	1019.6	9.8
19	0.0	16.5	75	1022.9	0.0	315	25.4	6.7	98	52	1024.2	1020.8	2.7
20	0.0	19.9	71	1021.5	0.0	348	28.3	10.7	98	49	1024.2	1018.8	4.0
21	5.6	20.8	66	1018.2	0.0	5	30.6	10.4	94	29	1021.2	1015.4	5.4
22	0.3	21.0	73	1013.8	0.0	208	30.3	12.2	98	42	1018.0	1010.3	3.1
23	0.0	23.9	48	1010.5	0.2	259	32.3	14.4	91	22	1015.9	1008.2	7.2
24	0.0	20.3	62	1016.8	0.2	284	31.2	11.3	93	22	1021.8	1015.3	4.9
25	0.0	18.8	67	1022.8	0.1	337	28.3	9.4	94	32	1023.8	1021.9	4.0
26	0.0	20.8	70	1020.6	0.0	304	31.1	9.8	95	40	1023.7	1017.7	4.0
27	0.0	21.0	73	1016.5	0.1	323	31.5	12.4	98	34	1019.0	1014.7	5.4
28	0.0	21.4	73	1018.4	0.0	287	30.4	14.3	96	38	1019.4	1017.4	5.4
29	0.3	21.8	63	1018.1	0.0	252	32.7	10.5	95	23	1019.8	1015.5	2.7
30	0.0	21.0	66	1020.5	0.0	0	29.8	12.9	96	27	1021.9	1019.7	0.0
31	0.0	20.7	72	1019.0	0.0	0	29.4	10.8	95	44	1021.5	1016.9	0.0

Gràfiques



Retorn a l'índex d'[InfoMet](#).

RIBES DE FRESER - juliol 2010

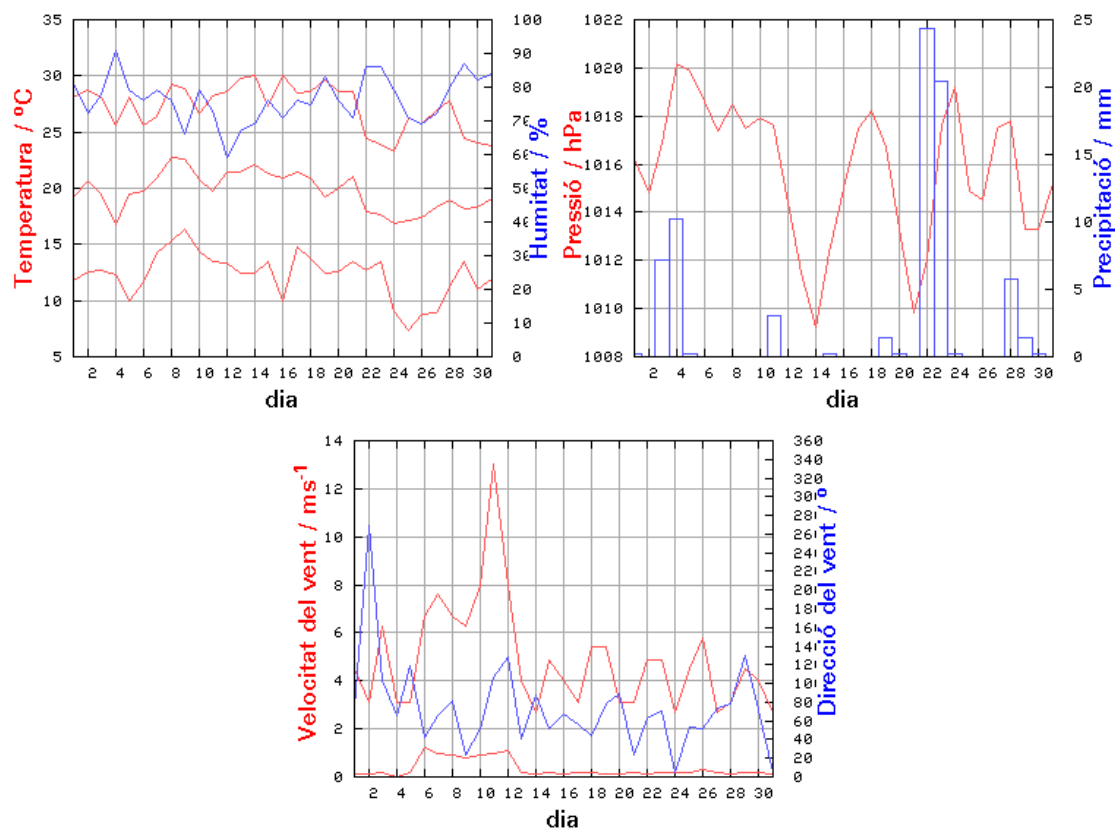
Resum del mes:

- **Valors mitjans:**
 - Temperatura: **19.7 °C**
 - Humitat: **76 %**
 - Pressió: **1015.8 hPa**
 - Velocitat del vent: **0.3 m/s**
 - Direcció: **66 °**
 - Precipitació: **75.0 mm**
- **Extrems:**
 - Temperatura màxima: **30.1 °C** el dia 14 a les 13:45
 - Temperatura mínima: **7.4 °C** el dia 25 a les 05:30
 - Humitat màxima: **100 %** el dia 2 a les 03:30
 - Humitat mínima: **37 %** el dia 16 a les 09:30
 - Pressió màxima: **1021.8 hPa** el dia 5 a les 05:45
 - Pressió mínima: **1007.2 hPa** el dia 14 a les 16:15
 - Velocitat màxima del vent: **13.0 m/s** el dia 11 a les 13:30
 - Precipitació màxima: **24.4 mm** el dia 22

Resum diari:

Dia	Pluja mm	Valors mitjans					Valors extrems						
		Temp °C	Hum %	Pres hPa	VV m/s	DV °	Temperatura °C		Humitat %		Pressió hPa		VV m/s
							màx	mín	màx	mín	màx	mín	
1	0.2	19.2	81	1016.2	0.1	74	28.1	11.8	98	51	1018.2	1014.8	4.5
2	0.0	20.7	72	1014.8	0.1	270	28.7	12.6	100	41	1016.4	1013.0	3.1
3	7.2	19.5	78	1016.9	0.2	104	28.1	12.7	97	40	1019.6	1015.5	6.3
4	10.2	16.7	91	1020.2	0.0	66	25.6	12.3	98	58	1021.4	1019.0	3.1
5	0.2	19.5	79	1019.9	0.2	119	28.1	9.9	98	56	1021.8	1018.1	3.1
6	0.0	19.8	76	1018.6	1.2	42	25.6	11.6	96	55	1020.2	1017.2	6.7
7	0.0	20.9	79	1017.4	1.0	66	26.4	14.2	99	58	1018.9	1016.1	7.6
8	0.0	22.7	76	1018.5	0.9	82	29.3	15.3	96	53	1019.5	1017.5	6.7
9	0.0	22.6	66	1017.5	0.8	24	28.9	16.4	97	39	1019.5	1016.3	6.3
10	0.0	20.8	79	1017.9	0.9	51	26.6	14.4	98	57	1019.0	1016.5	8.0
11	3.0	19.7	73	1017.6	1.0	107	28.2	13.5	97	40	1018.8	1016.0	13.0
12	0.0	21.4	59	1014.4	1.1	128	28.6	13.3	85	38	1018.3	1012.3	8.0
13	0.0	21.4	67	1011.5	0.2	41	29.8	12.4	97	38	1013.7	1009.4	4.0
14	0.0	22.1	69	1009.2	0.1	88	30.1	12.4	94	40	1011.2	1007.2	2.7
15	0.2	21.3	76	1012.3	0.2	52	27.3	13.5	96	42	1014.8	1010.8	4.9
16	0.0	20.9	71	1015.0	0.1	68	30.0	9.9	97	37	1017.0	1014.0	4.0
17	0.0	21.4	76	1017.5	0.2	56	28.5	14.8	98	54	1020.1	1016.5	3.1
18	0.0	20.9	75	1018.2	0.2	44	28.6	13.8	97	48	1019.8	1016.2	5.4
19	1.4	19.2	83	1016.7	0.1	78	29.7	12.4	97	51	1018.7	1014.7	5.4
20	0.2	20.0	76	1013.3	0.1	89	28.6	12.6	98	44	1016.9	1010.6	3.1
21	0.0	21.0	71	1009.8	0.2	24	28.6	13.5	97	43	1010.8	1008.5	3.1
22	24.4	17.9	86	1012.1	0.1	62	24.4	12.7	97	55	1016.3	1010.0	4.9
23	20.4	17.7	86	1017.6	0.2	71	23.9	13.5	98	61	1021.3	1014.6	4.9
24	0.2	16.9	79	1019.2	0.2	5	23.3	9.1	98	58	1021.2	1017.1	2.7
25	0.0	17.1	71	1014.9	0.2	54	26.2	7.4	95	44	1017.7	1012.2	4.5
26	0.0	17.4	69	1014.5	0.3	52	25.8	8.8	95	37	1017.7	1013.4	5.8
27	0.0	18.3	72	1017.5	0.2	73	26.9	8.9	96	45	1019.7	1016.1	2.7
28	5.8	19.0	80	1017.8	0.1	78	27.8	11.3	97	51	1020.3	1015.7	3.1
29	1.4	18.2	87	1013.3	0.2	130	24.4	13.5	98	67	1016.4	1011.7	4.5
30	0.2	18.3	82	1013.3	0.2	72	24.0	11.0	98	62	1015.7	1011.9	4.0
31	0.0	19.1	84	1015.2	0.1	4	23.8	11.9	98	69	1016.3	1014.2	2.7

Gràfiques



Retorn a l'índex d'[InfoMet](#).

RIBES DE FRESE - agost 2010

Resum del mes:

- **Valors mitjans:**

- Temperatura: **17.9 °C**
- Humitat: **80 %**
- Pressió: **1015.5 hPa**
- Velocitat del vent: **0.1 m/s**
- Direcció: **52 °**
- Precipitació: **86.2 mm**

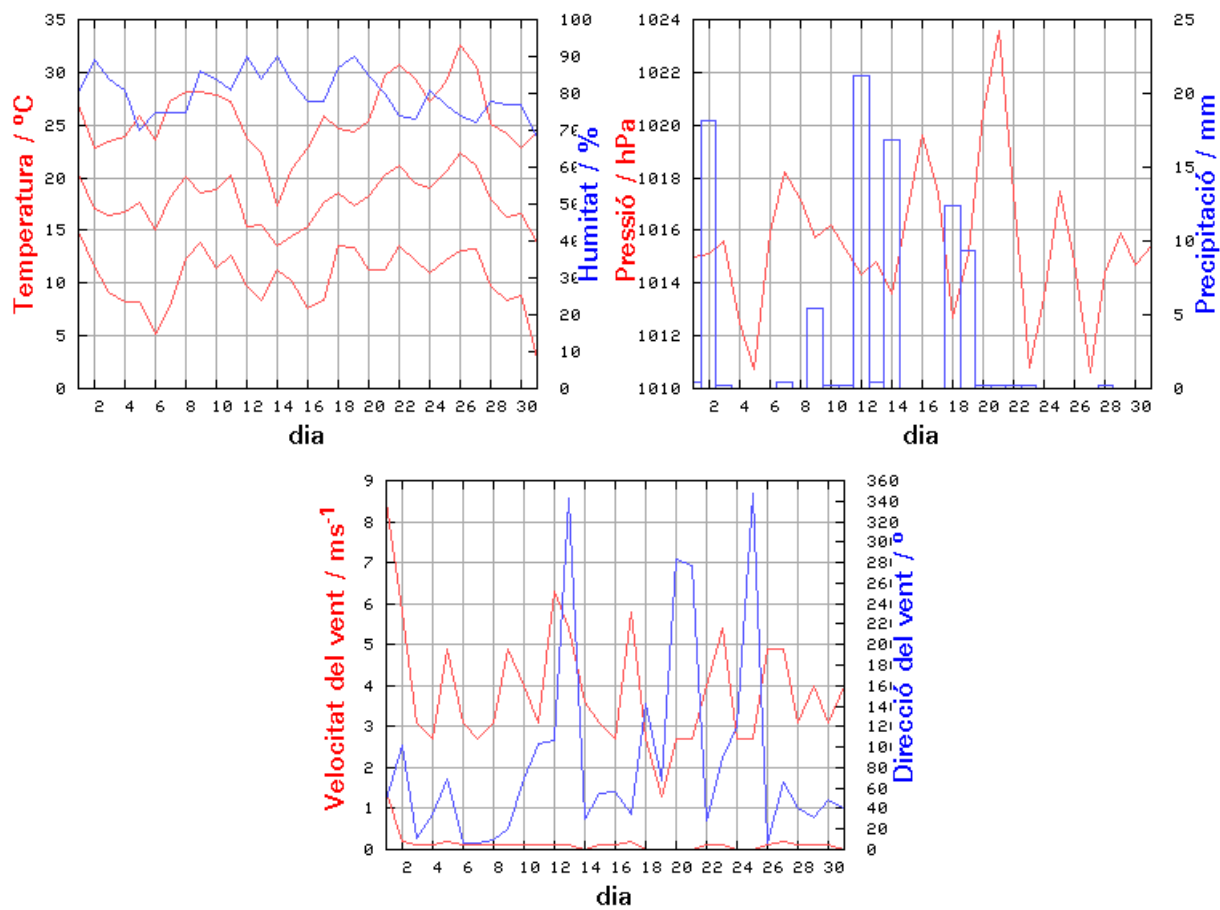
- **Extrem:**

- Temperatura màxima: **32.5 °C** el dia 26 a les 14:30
- Temperatura mínima: **2.9 °C** el dia 31 a les 05:45
- Humitat màxima: **100 %** el dia 26 a les 06:30
- Humitat mínima: **21 %** el dia 5 a les 14:30
- Pressió màxima: **1025.6 hPa** el dia 21 a les 07:00
- Pressió mínima: **1008.7 hPa** el dia 23 a les 14:45
- Velocitat màxima del vent: **8.5 m/s** el dia 1 a les 18:00
- Precipitació màxima: **21.2 mm** el dia 12

Resum diari:

Dia	Pluja mm	Valors mitjans					Valors extrems						
		Temp °C	Hum %	Pres hPa	VV m/s	DV °	Temperatura		Humitat		Pressió		VV m/s
							màx °C	mín °C	màx %	mín %	màx hPa	mín hPa	
1	0.4	20.4	80	1015.0	1.4	49	26.9	14.9	99	55	1016.4	1012.9	8.5
2	18.2	17.1	89	1015.1	0.2	101	22.8	11.5	98	70	1017.5	1013.1	5.8
3	0.2	16.4	84	1015.6	0.1	11	23.4	9.2	98	60	1016.8	1014.4	3.1
4	0.0	16.8	81	1012.5	0.1	35	23.9	8.2	98	58	1015.2	1010.6	2.7
5	0.0	17.6	70	1010.7	0.2	69	25.8	8.2	96	21	1014.2	1009.5	4.9
6	0.0	15.1	75	1015.9	0.1	7	23.6	5.2	95	50	1018.5	1013.7	3.1
7	0.4	18.1	75	1018.2	0.1	6	27.2	7.7	97	49	1019.4	1017.3	2.7
8	0.0	20.1	75	1017.2	0.1	9	28.2	12.3	98	44	1019.5	1015.7	3.1
9	5.4	18.5	86	1015.7	0.1	21	28.1	13.8	96	60	1018.1	1013.5	4.9
10	0.2	18.9	84	1016.2	0.1	69	27.9	11.4	98	59	1017.7	1014.3	4.0
11	0.2	20.3	81	1015.3	0.1	103	27.2	12.7	98	62	1016.6	1013.9	3.1
12	21.2	15.4	90	1014.3	0.1	107	23.8	9.7	98	65	1016.1	1012.5	6.3
13	0.4	15.5	84	1014.8	0.1	343	22.4	8.4	98	64	1016.3	1013.4	5.4
14	16.8	13.6	90	1013.6	0.0	30	17.4	11.2	97	73	1015.7	1012.5	3.6
15	0.0	14.4	83	1016.5	0.1	55	20.8	10.2	98	53	1019.7	1015.0	3.1
16	0.0	15.3	78	1019.6	0.1	57	22.8	7.6	98	45	1021.6	1018.4	2.7
17	0.0	17.6	78	1017.4	0.2	34	25.8	8.3	97	49	1020.7	1014.2	5.8
18	12.4	18.5	87	1012.7	0.0	143	24.6	13.6	97	69	1015.4	1010.4	2.7
19	9.4	17.4	90	1015.2	0.0	68	24.4	13.4	98	68	1018.2	1013.6	1.3
20	0.2	18.3	85	1020.5	0.0	283	25.4	11.2	98	63	1024.4	1017.0	2.7
21	0.2	20.3	80	1023.6	0.0	277	29.6	11.2	98	52	1025.6	1021.3	2.7
22	0.2	21.1	74	1017.4	0.1	28	30.7	13.6	98	42	1022.6	1014.0	4.0
23	0.2	19.5	73	1010.8	0.1	90	29.3	12.2	96	38	1014.4	1008.7	5.4
24	0.0	19.0	81	1013.5	0.0	121	27.3	11.0	96	59	1016.9	1011.2	2.7
25	0.0	20.6	77	1017.5	0.0	347	29.0	12.2	97	49	1018.9	1016.5	2.7
26	0.0	22.3	74	1014.8	0.1	7	32.5	13.1	100	37	1018.3	1011.8	4.9
27	0.0	21.2	72	1010.6	0.2	65	30.6	13.3	97	25	1014.2	1008.7	4.9
28	0.2	17.9	78	1014.4	0.1	40	25.1	9.7	98	51	1016.4	1013.1	3.1
29	0.0	16.3	77	1015.9	0.1	31	24.2	8.4	97	52	1017.4	1014.4	4.0
30	0.0	16.6	77	1014.7	0.1	49	22.8	8.9	93	54	1016.5	1013.0	3.1
31	0.0	13.8	68	1015.4	0.0	41	24.3	2.9	93	27	1017.4	1013.2	4.0

Gràfiques



Retorn a l'índex d'[InfoMet](#).

RIBES DE FRESEER - agost 2009

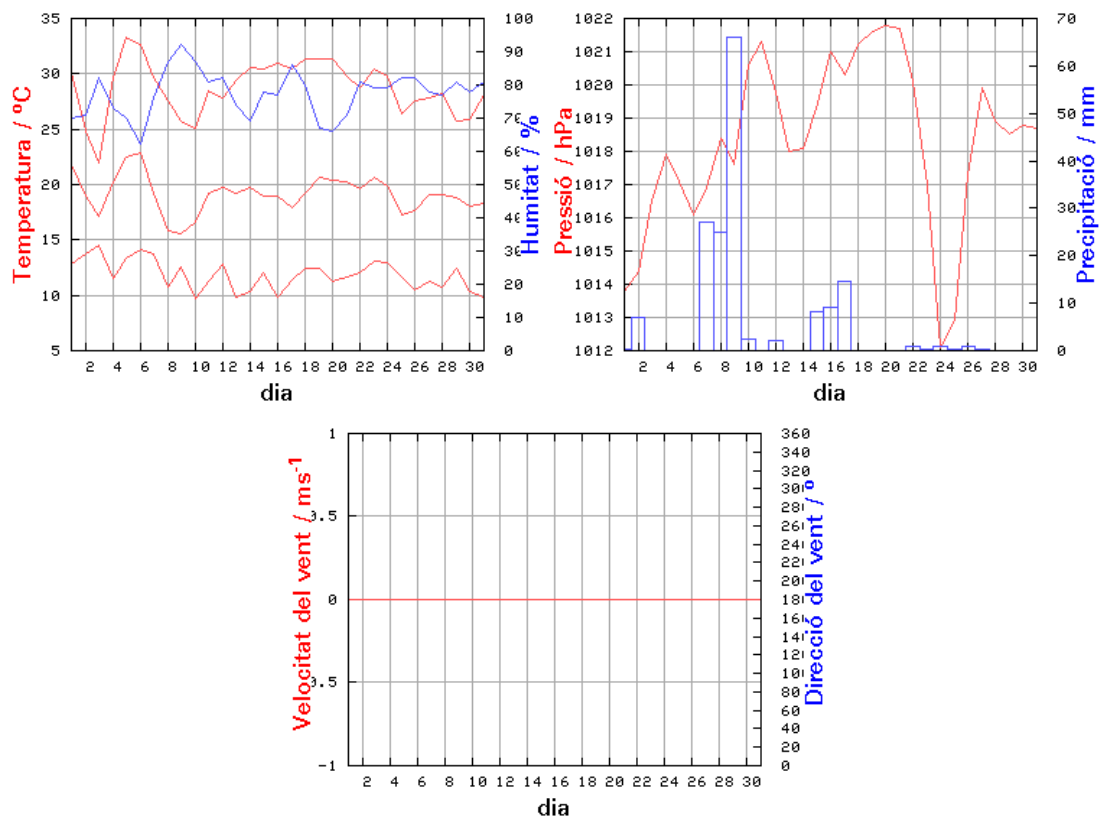
Resum del mes:

- **Valors mitjans:**
 - Temperatura: **19.1 °C**
 - Humitat: **77 %**
 - Pressió: **1018.3 hPa**
 - Velocitat del vent: **0.0 m/s**
 - Direcció: **0 °**
 - Precipitació: **165.4 mm**
- **Extrems:**
 - Temperatura màxima: **33.3 °C** el dia 5 a les 16:30
 - Temperatura mínima: **9.7 °C** el dia 10 a les 07:00
 - Humitat màxima: **99 %** el dia 9 a les 09:30
 - Humitat mínima: **27 %** el dia 6 a les 16:00
 - Pressió màxima: **1023.2 hPa** el dia 21 a les 01:00
 - Pressió mínima: **1009.9 hPa** el dia 1 a les 20:30
 - Velocitat màxima del vent: **0.0 m/s** el dia 0 a les 00:00
 - Precipitació màxima: **66.0 mm** el dia 9

Resum diari:

Dia	Pluja	Valors mitjans					Valors extrems						
		Temp	Hum	Pres	VV	DV	Temperatura		Humitat		Pressió		VV
							màx	mín	màx	mín	màx	mín	
mm	°C	%	hPa	m/s	°	°C	°C	%	%	hPa	hPa	m/s	
1	0.3	21.8	70	1013.8	0.0	0	30.2	12.8	96	42	1018.2	1009.9	0.0
2	6.9	18.9	71	1014.4	0.0	0	24.8	13.7	97	28	1016.5	1012.9	0.0
3	0.0	17.1	82	1016.5	0.0	0	22.0	14.5	93	67	1019.2	1015.4	0.0
4	0.0	20.2	73	1017.9	0.0	0	29.6	11.5	96	45	1019.6	1015.8	0.0
5	0.0	22.5	70	1017.1	0.0	0	33.3	13.4	98	34	1018.4	1015.3	0.0
6	0.0	22.9	62	1016.1	0.0	0	32.6	14.1	94	27	1018.1	1014.2	0.0
7	27.2	19.2	76	1016.9	0.0	0	29.7	13.7	96	39	1019.4	1014.9	0.0
8	25.1	15.8	87	1018.4	0.0	0	27.6	10.8	98	51	1019.7	1016.4	0.0
9	66.0	15.6	92	1017.6	0.0	0	25.7	12.6	99	57	1019.4	1015.6	0.0
10	2.5	16.6	87	1020.6	0.0	0	25.1	9.7	99	60	1022.3	1019.0	0.0
11	0.0	19.2	81	1021.3	0.0	0	28.5	11.3	98	54	1023.0	1019.1	0.0
12	2.0	19.7	82	1019.8	0.0	0	27.8	12.8	98	55	1022.3	1017.3	0.0
13	0.0	19.2	74	1018.0	0.0	0	29.4	9.8	98	41	1019.7	1015.9	0.0
14	0.0	19.8	69	1018.1	0.0	0	30.6	10.3	92	32	1019.6	1016.5	0.0
15	8.1	18.9	78	1019.3	0.0	0	30.4	12.0	98	40	1021.6	1017.9	0.0
16	9.1	19.0	77	1021.0	0.0	0	30.9	9.8	98	38	1022.6	1019.6	0.0
17	14.7	17.9	86	1020.3	0.0	0	30.4	11.4	98	46	1022.0	1018.1	0.0
18	0.0	19.2	80	1021.2	0.0	0	31.3	12.4	99	40	1022.5	1019.9	0.0
19	0.0	20.7	67	1021.6	0.0	0	31.4	12.4	91	28	1023.1	1020.2	0.0
20	0.0	20.4	66	1021.8	0.0	0	31.3	11.3	89	30	1023.2	1020.0	0.0
21	0.0	20.2	71	1021.7	0.0	0	29.8	11.7	93	38	1023.2	1020.0	0.0
22	1.0	19.6	81	1020.1	0.0	0	28.7	12.1	98	50	1022.0	1018.3	0.0
23	0.3	20.6	79	1017.0	0.0	0	30.4	13.1	99	47	1020.8	1013.6	0.0
24	0.8	19.9	79	1012.1	0.0	0	29.8	12.9	97	46	1014.9	1010.0	0.0
25	0.3	17.2	82	1012.9	0.0	0	26.4	11.6	94	46	1015.6	1011.5	0.0
26	0.8	17.6	82	1017.3	0.0	0	27.5	10.5	98	52	1020.1	1015.9	0.0
27	0.3	19.1	78	1019.9	0.0	0	27.8	11.2	97	50	1021.2	1017.8	0.0
28	0.0	19.1	77	1018.9	0.0	0	28.2	10.7	96	48	1019.8	1017.4	0.0
29	0.0	18.8	81	1018.5	0.0	0	25.7	12.4	96	60	1019.5	1017.4	0.0
30	0.0	18.0	78	1018.8	0.0	0	25.9	10.3	97	55	1020.3	1017.8	0.0
31	0.0	18.3	81	1018.7	0.0	0	28.1	9.8	98	55	1020.5	1016.8	0.0

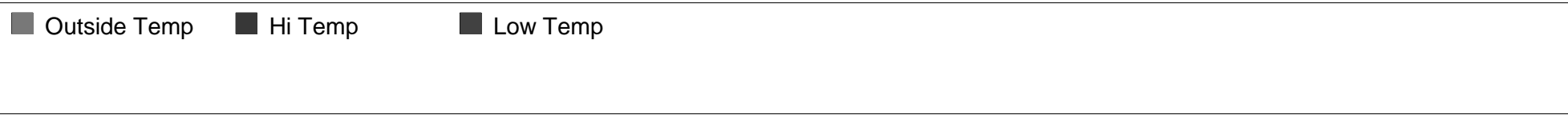
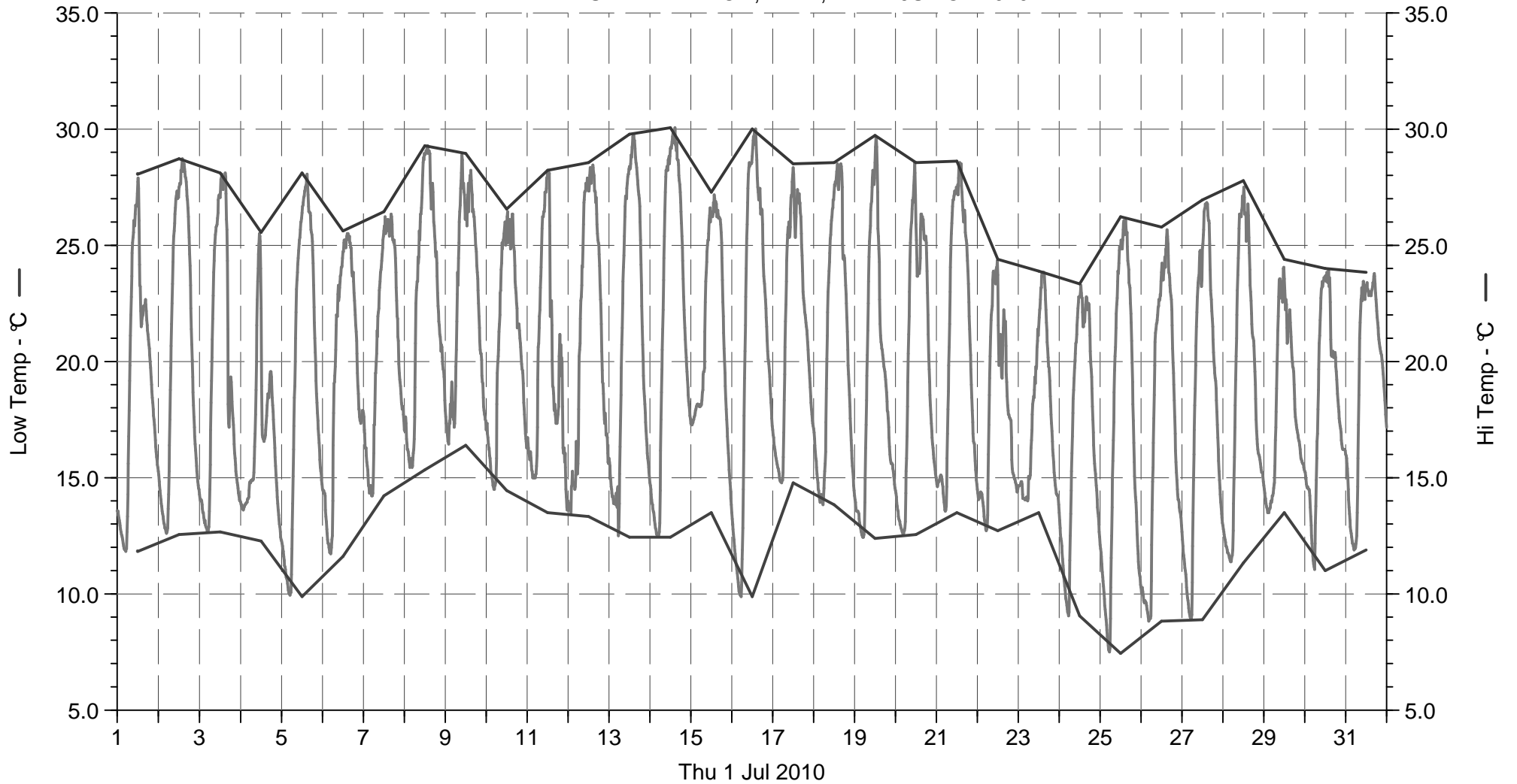
Gràfiques



Retorn a l'índex d'[InfoMet](#).

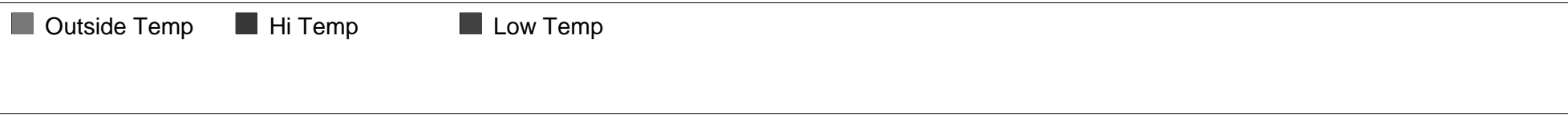
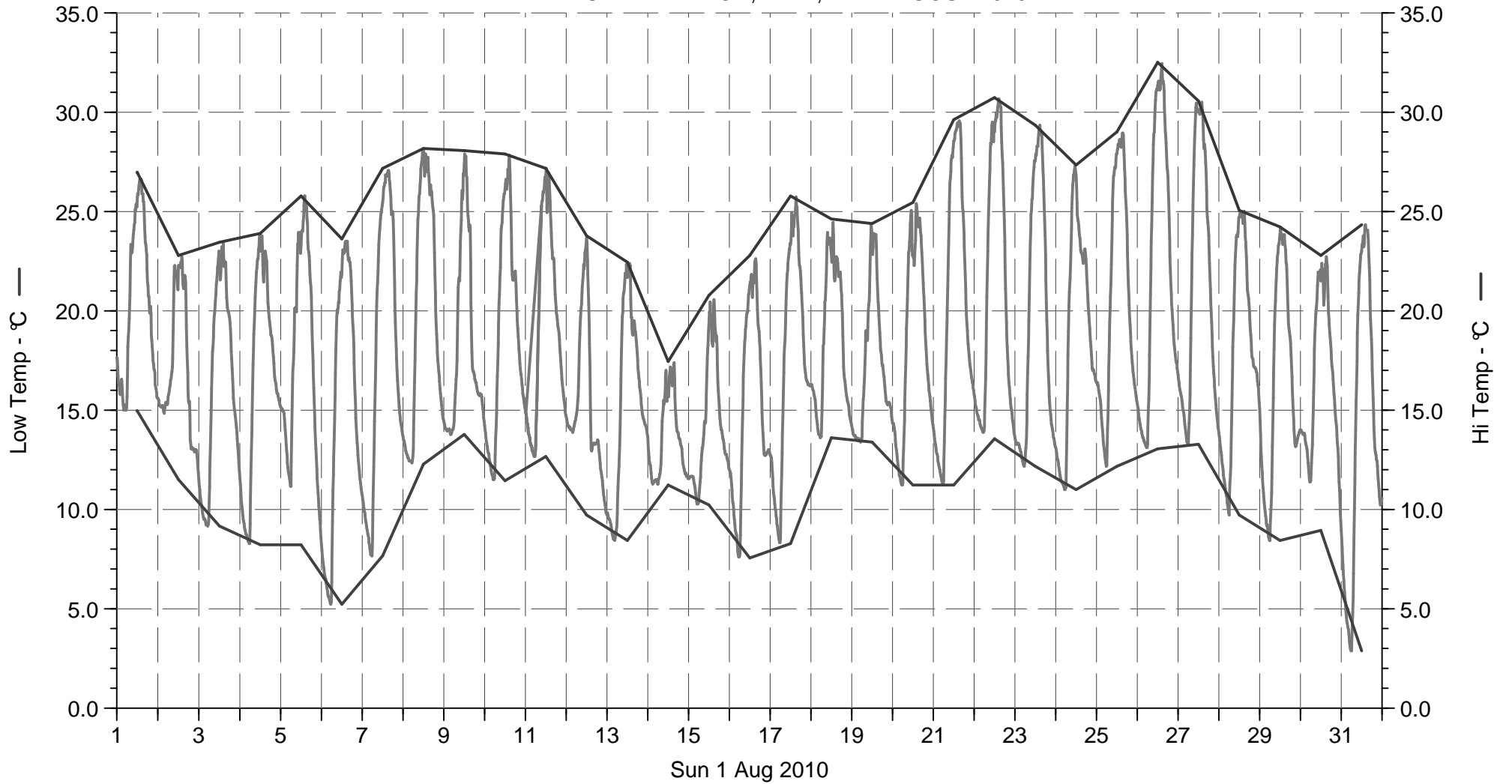
Pc.13F.VermellaCampingValdeRibes

TEMPERATURA EXTERIOR, MÀX., MÍN. - JULIOL 2010



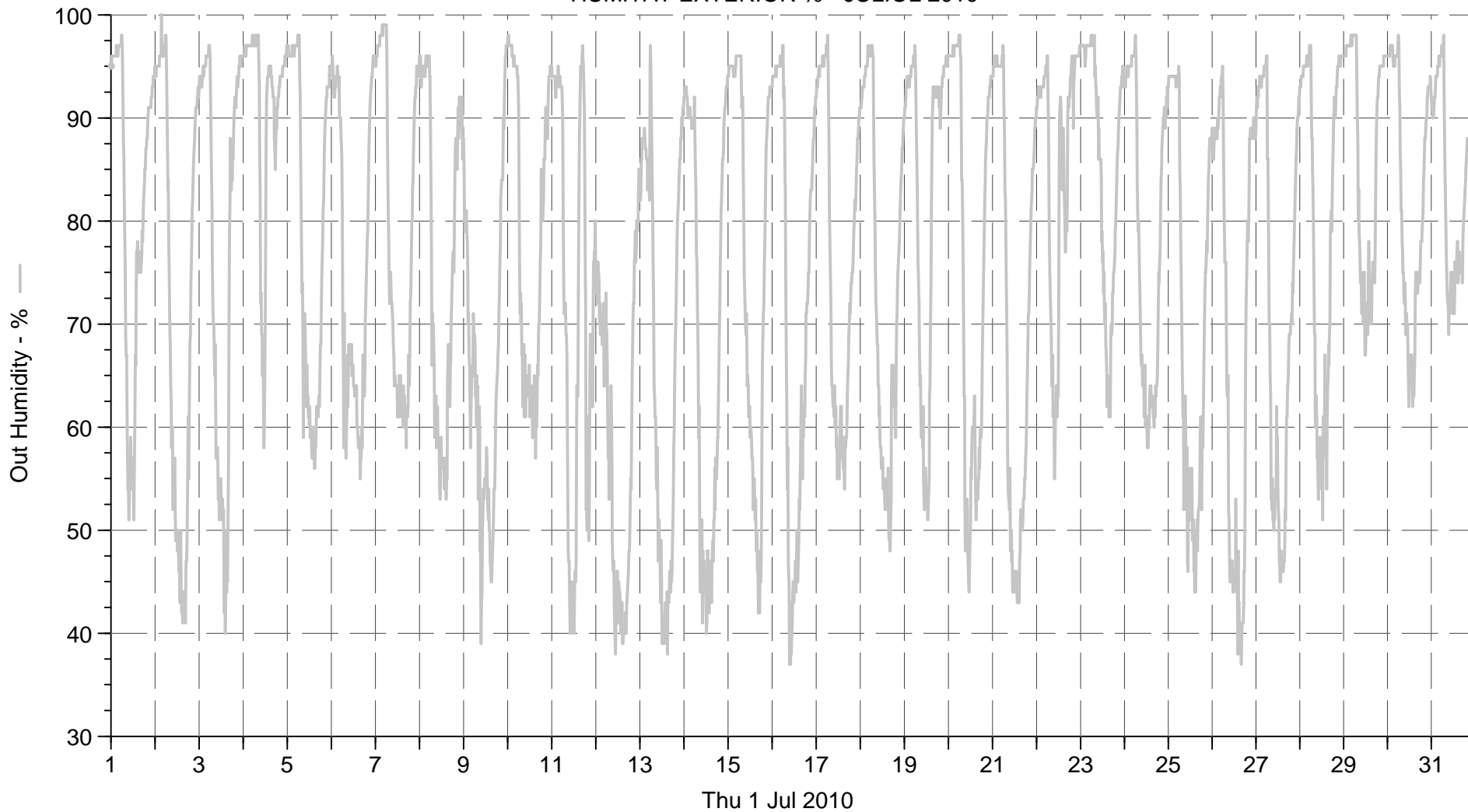
Pc.13F.VermellaCampingValdeRibes

TEMPERATURA EXTERIOR, MÀX., MÍN. - AGOST 2010



Pc.13F.VermellaCampingValdeRibes

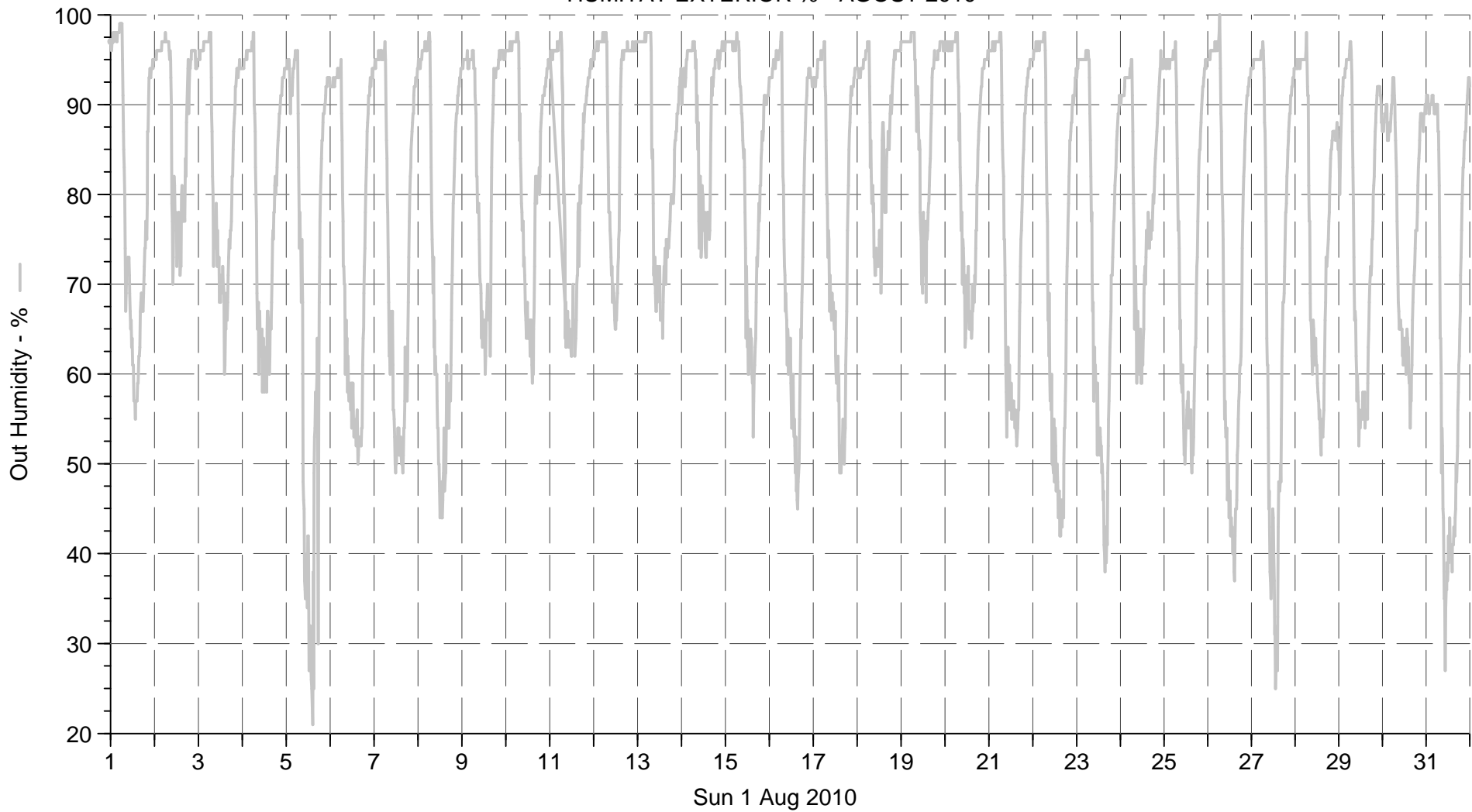
HUMITAT EXTERIOR % - JULIOL 2010



■ Out Humidity

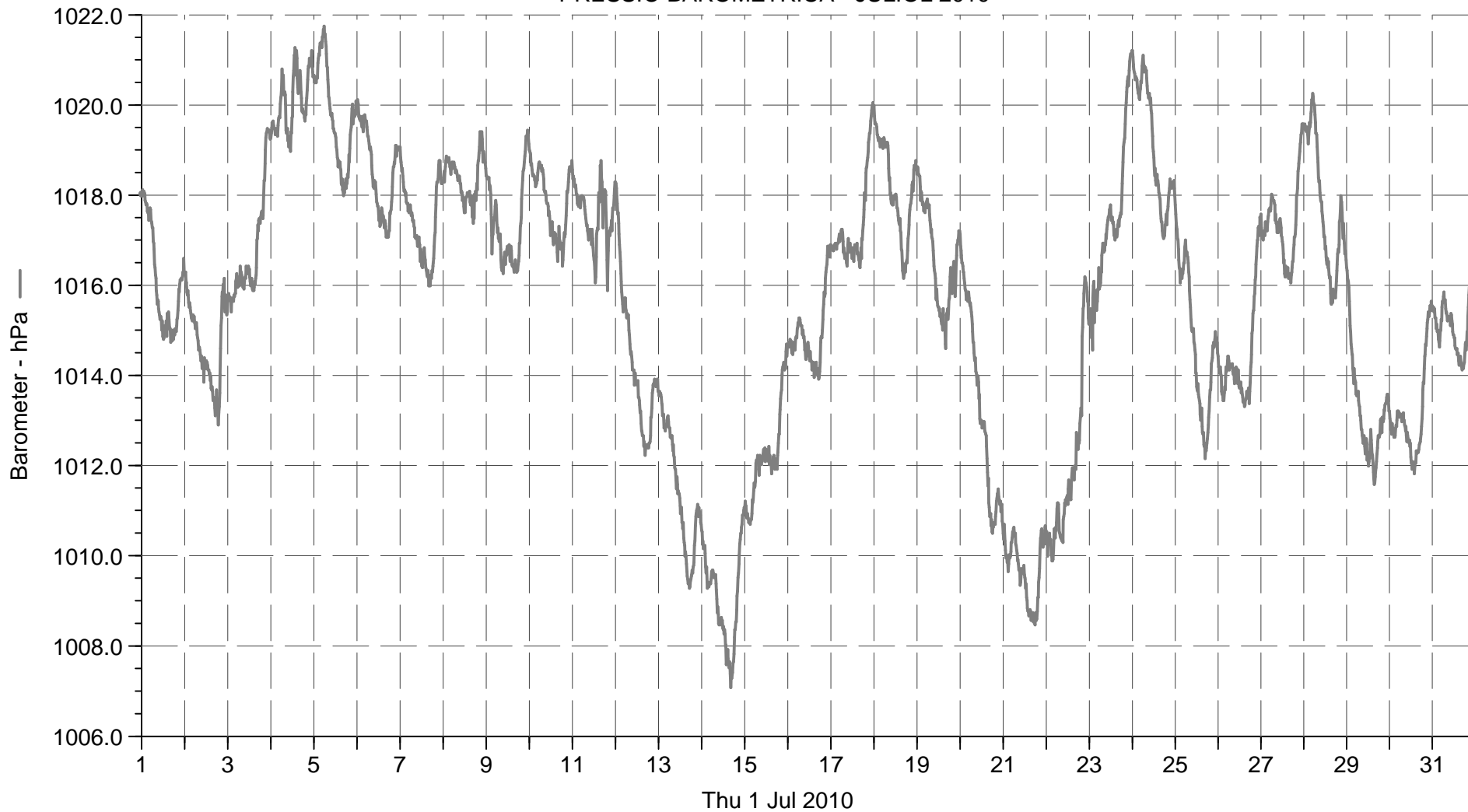
Pc.13F.VermellaCampingValdeRibes

HUMITAT EXTERIOR % - AGOST 2010



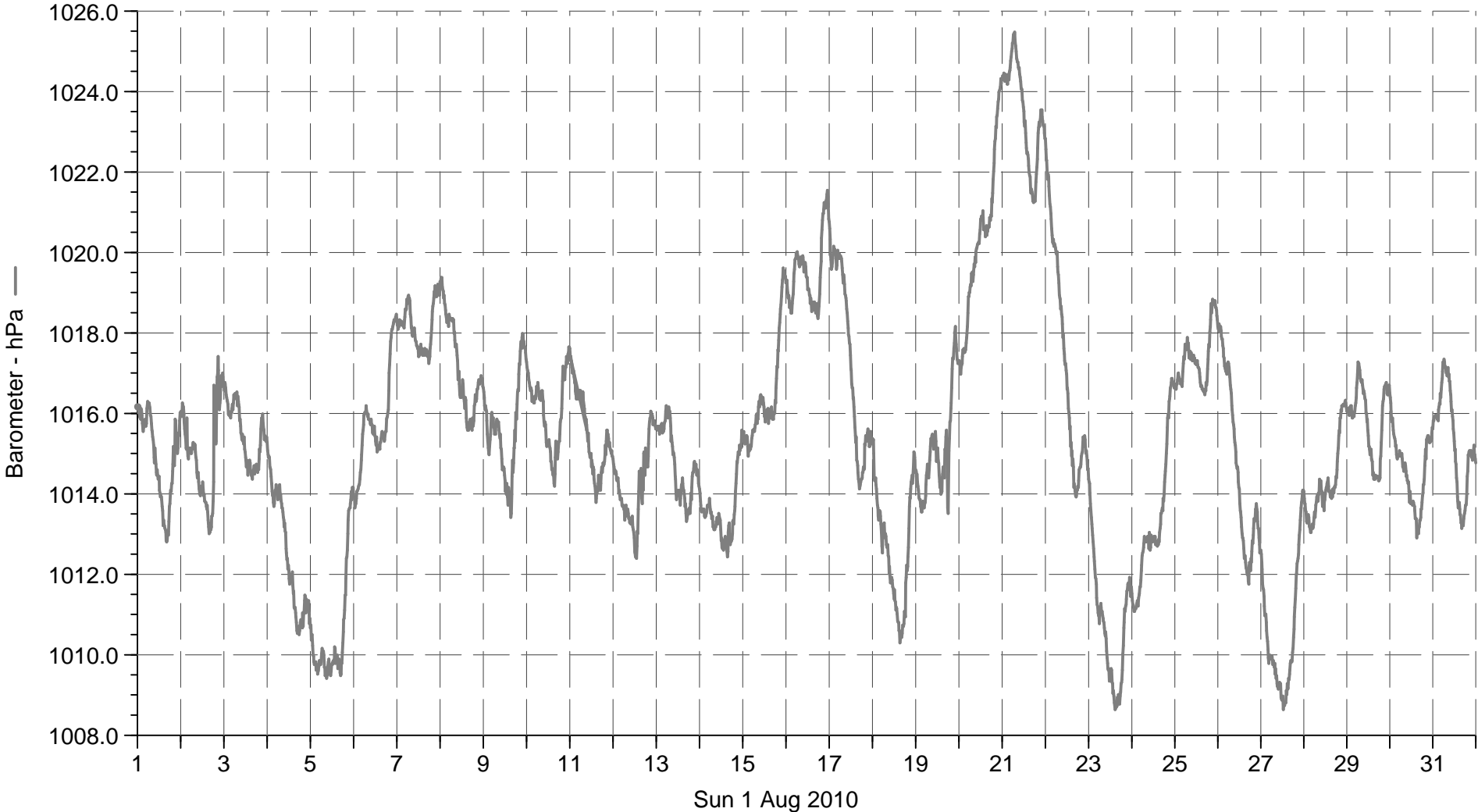
■ Out Humidity

Pc.13F.VermellaCampingValdeRibes
PRESSIÓ BAROMÈTRICA - JULIOL 2010



■ Barometer

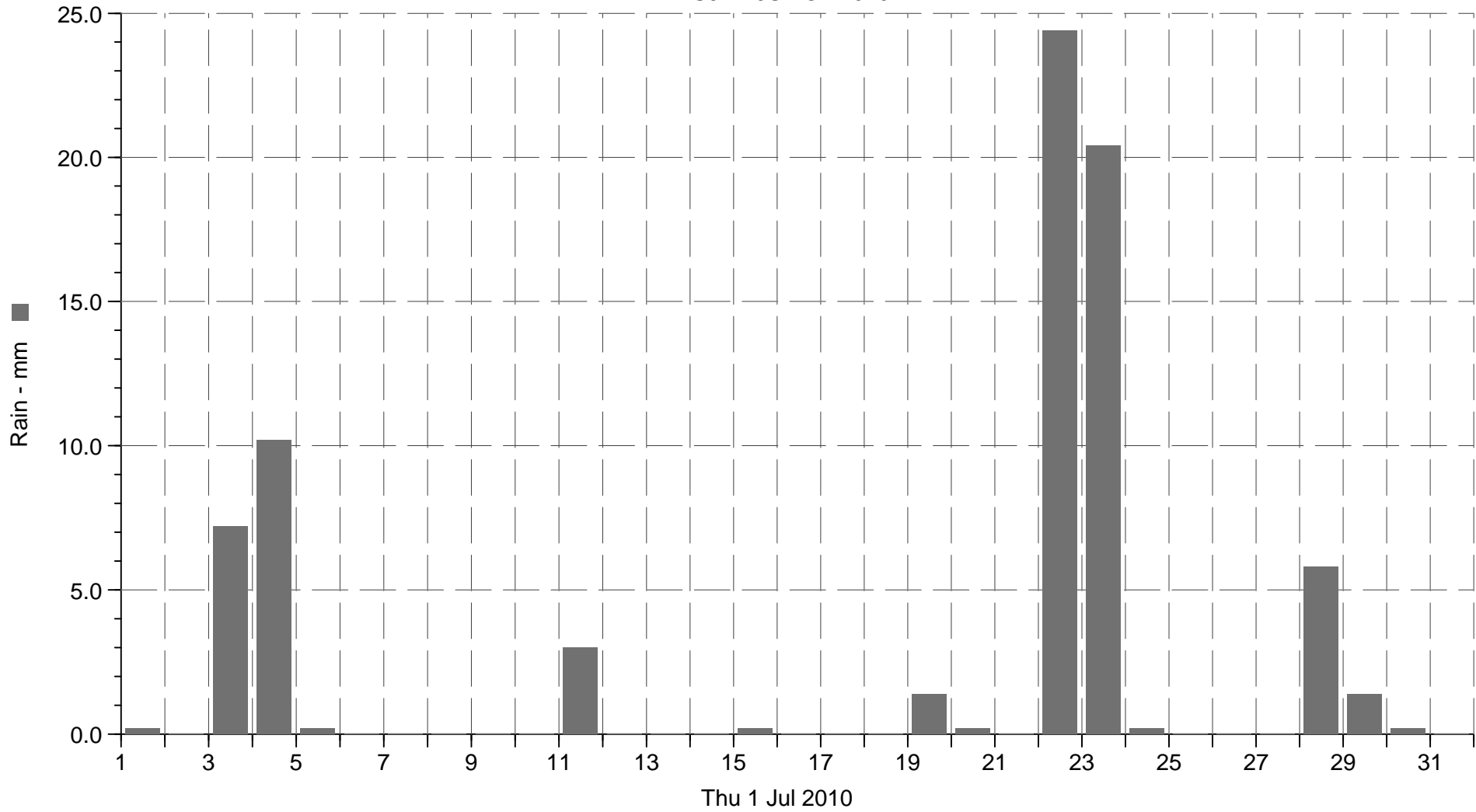
Pc.13F.VermellaCampingValdeRibes
PRESSIÓ BAROMÈTRICA - AGOST 2010



■ Barometer

Pc.13F.VermellaCampingValdeRibes

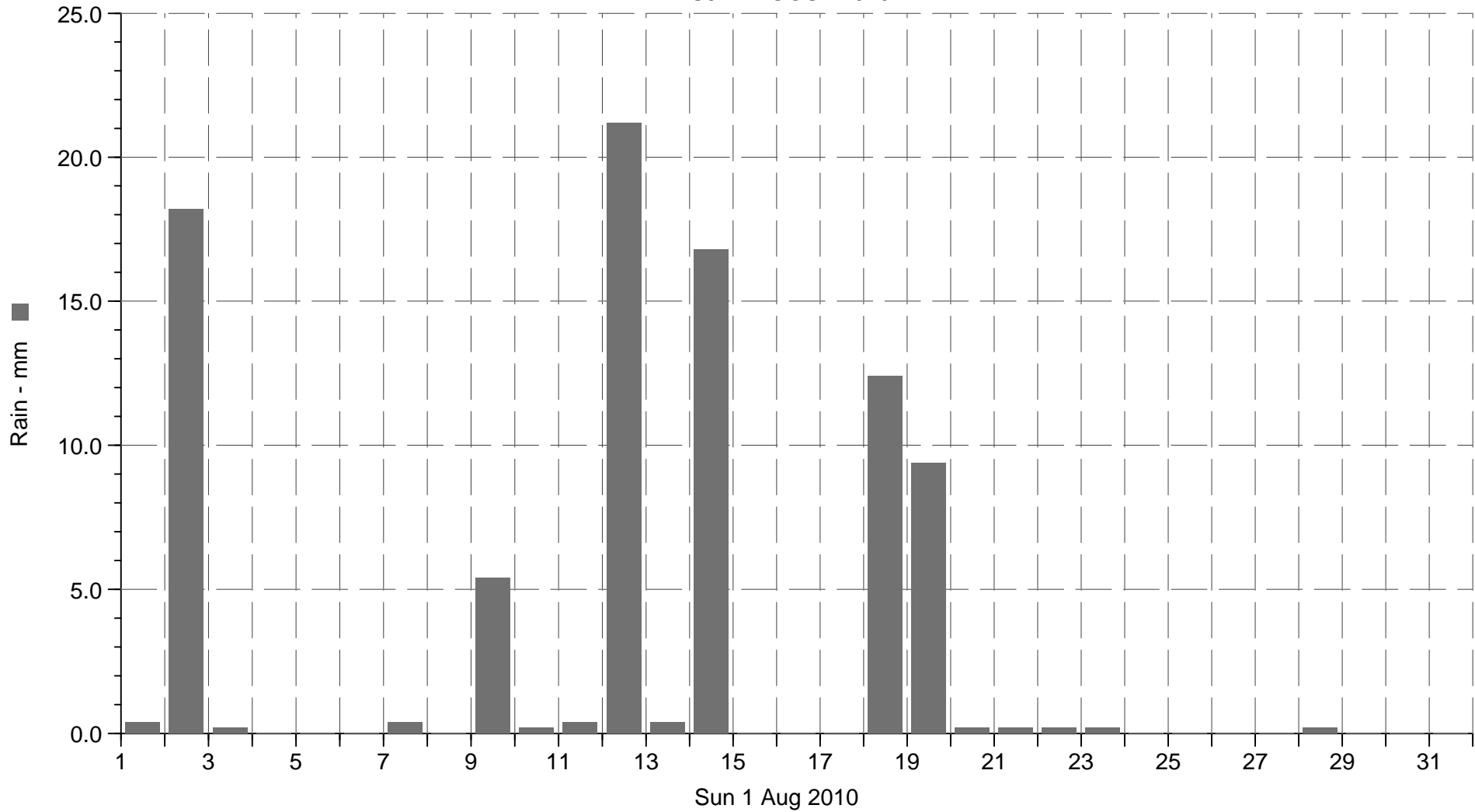
PLUJA - JULIOL 2010



■ Rain

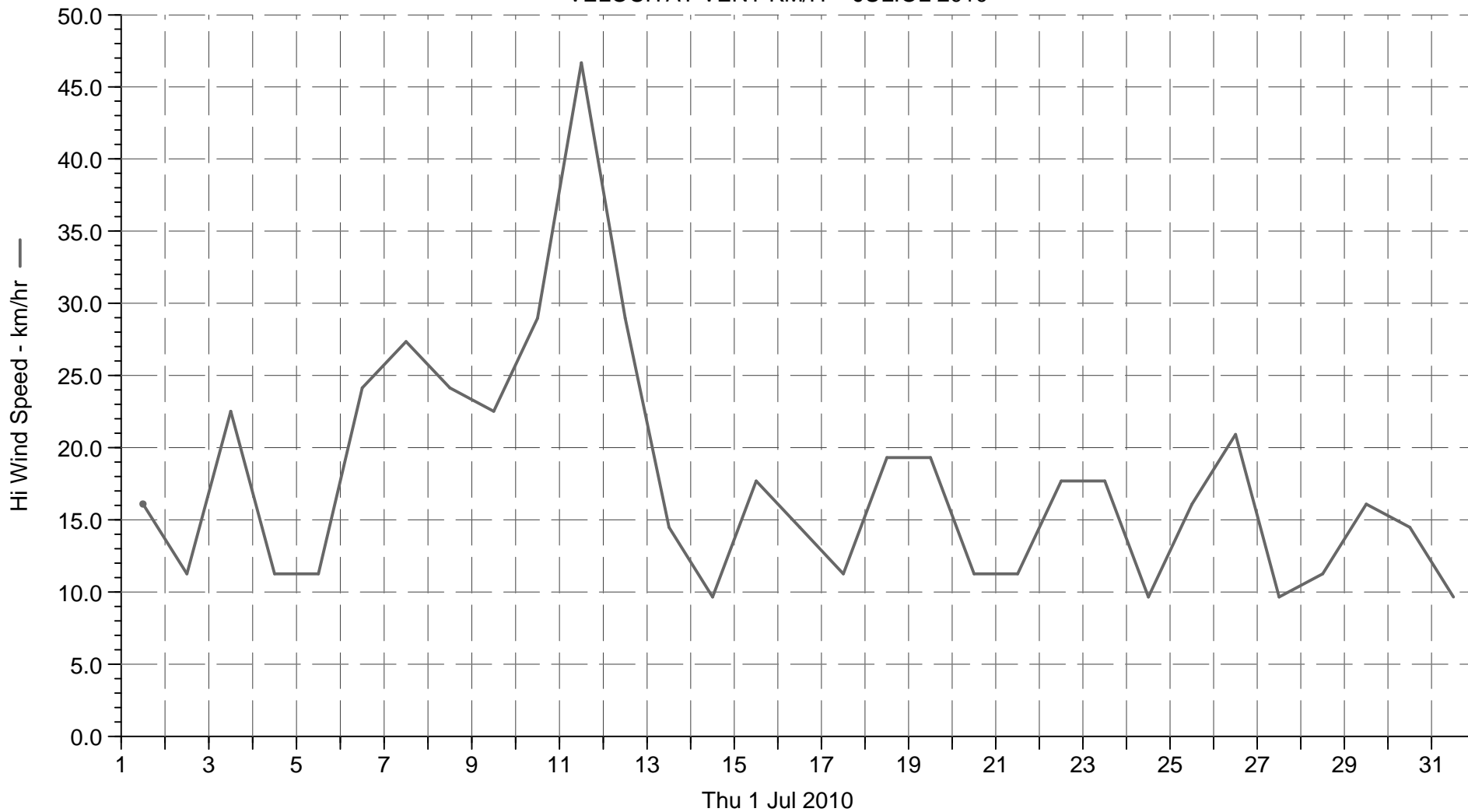
Pc.13F.VermellaCampingValdeRibes

PLUJA - AGOST 2010



■ Rain

Pc.13F.VermellaCampingValdeRibes
VELOCITAT VENT KM/H - JULIOL 2010



■ Hi Wind Speed

Pc.13F.VermellaCampingValdeRibes
VELOCITAT VENT KM/H - AGOST 2010

